

HOE TONGA PADDLER SERIES RACE 2



DATE: 6 August 2022

VENUE: Ngāti Toa Domain, Paremata

ENQUIRIES: toawakaama@gmail.com

Kaupapa

This is the second race of the [Hoe Tonga Paddler Series](#). This event will be hosted by Toa Waka Ama club and used to continue the promotion of Waka Ama in the community.

Deadlines

- Entries close on Saturday 30 July 2022.
- The paddler roster closes on Wednesday 3 August 2022.

Participants

This race is open to novice, junior (J16/J19) and senior paddlers. All novice and junior teams must have an experienced steerer. Teams racing in the novice category can be a combination of different age groups J16 – J70+. All paddlers must be affiliated to a Waka Ama club and Waka Ama NZ.

Safety

Life jackets are mandatory. Belt bags are acceptable.

Programme

6:00am	Volunteers arrive
6:15am	Volunteers briefing
7:00am	Registration opens, rigging waka and safety checks commence
8:00am	Karakia & short course race brief
8:15am	Short course race start
9:00am	Registrations for long course – safety checks commence
9:45am	Long course race brief
10:00am	Long course race start
12:00pm	Pack up kai available at race venue.

Entries

Entries are to be done online by your club via www.wakaama.co.nz.

Senior paddlers are encouraged to assist novice teams (eg by steering) in the short course. There is no extra cost for senior paddlers also competing in both long and short course event.

It is compulsory for all teams and paddler to register via the online system. Entries will not be accepted on the day.

Entry fees are non-refundable but can be transferred to a paddler in your team.

Venue and parking

Ngāti Toa Domain, South end



Race waiver form & safety check form

The waiver forms and safety check forms are available at <https://hoetonga.co.nz/2022/04/13/hoetonga-paddler-series-2022/> for the Series.

All race participants are required to read and sign a waiver form and hand it in at Registration, which will be located in the Toa Waka Ama Gazebo.

Paddlers 18 years or under must have a parent or guardian sign the form for them.

Cancellation

Extreme weather conditions such as high wind and/or rain that jeopardise the safety of paddlers may lead to cancellation of the race. Event organisers will endeavour to inform entrants of this by email, txt or Facebook by 12pm the day before the event or as early as possible on the day of the event.

Race courses

Any change to the course due to weather conditions or other factors will be notified at the race briefing.

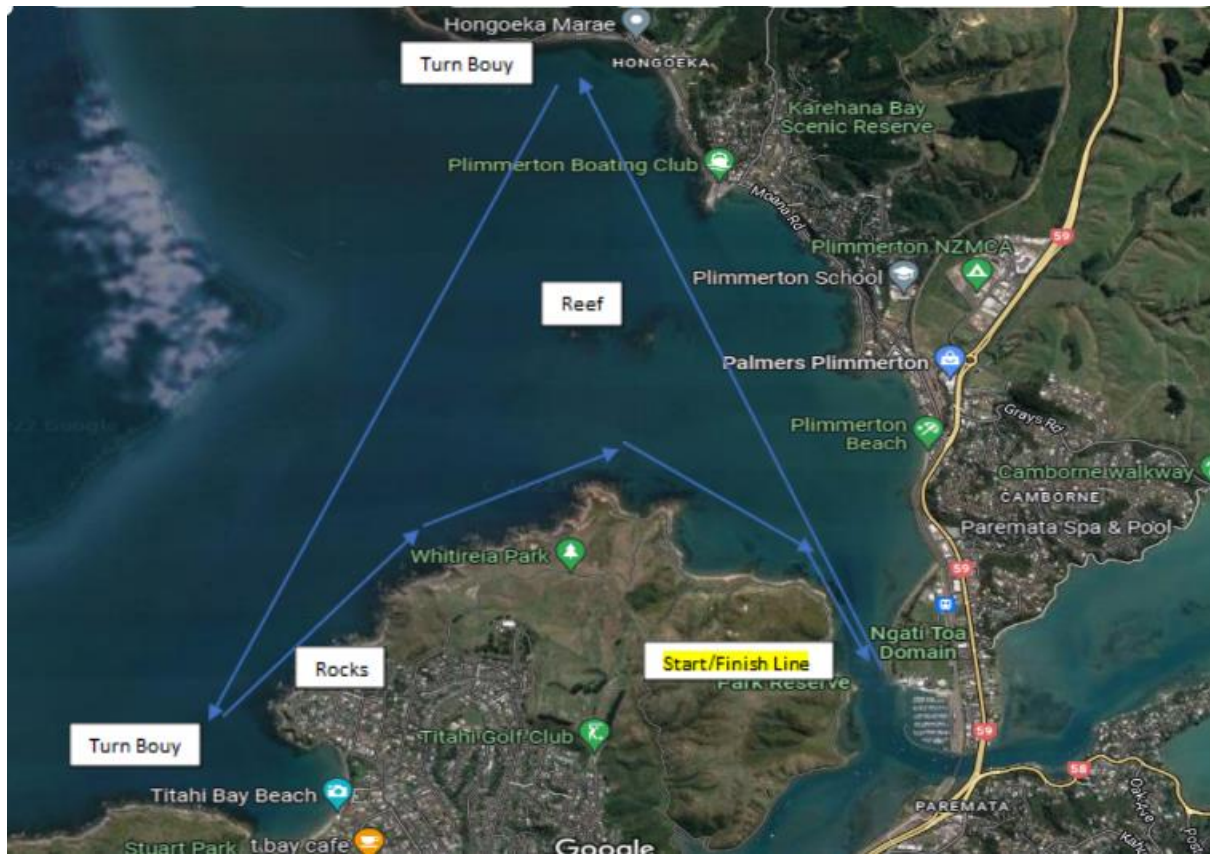
MAP 1: RACE 1 Junior/Novice Preferred Course (8km)



MAP 2: RACE 1 Junior/Novice Alternative Course (8km)



MAP 3: Race 2 Open Course Preferred (15km)



MAP 4: Race 2 Open Alternative Course

